

ME'DECOR

STONE SERIES

ME'DECOR

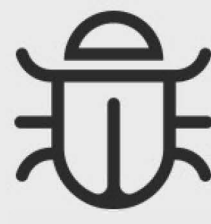
WPC wall panel

WPC uses polyethylene, polypropylene, and polyvinyl chloride instead of commonly used resin adhesives to mix with more than 50% of waste plant fibers such as wood powder, rice husk, and straw to form new wood materials.

Then, it produces boards or profiles through plastic processing processes such as extrusion, molding, and injection molding.



Waterproof



Insect prevention

E0

Environmental protection

B1

Flame-retardant



Thickness: 5mm&8mm



Bending and shaping



Waterproof and moisture-proof

PRODUCTS

LENGTH AND WIDTH: 1100*2800(mm)

THICKNESS: 5mm&8mm

ENVIRONMENTAL PROTECTION GRADE: ENF

FIRE RATING: B1

PERFORMANCE: waterproof&bendable

▼ INSTALL



1&4. Puttying and leveling

2. Apply structural adhesive on the back

3. Metal profile connection

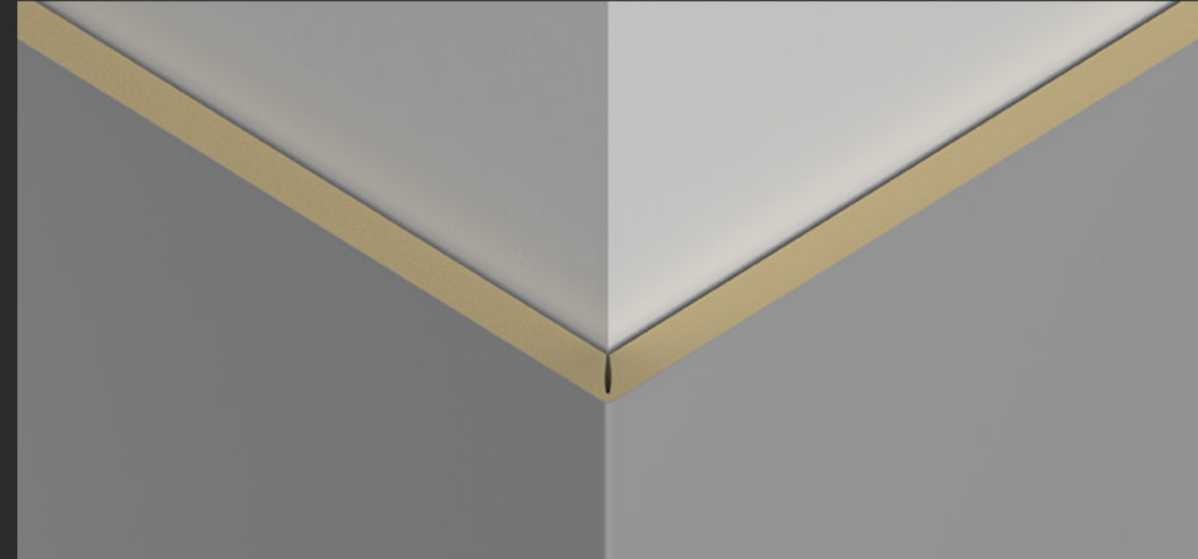
5. Rough wall



1. Apply structural adhesive on the back

2. Metal profile connection

3. Puttying and leveling

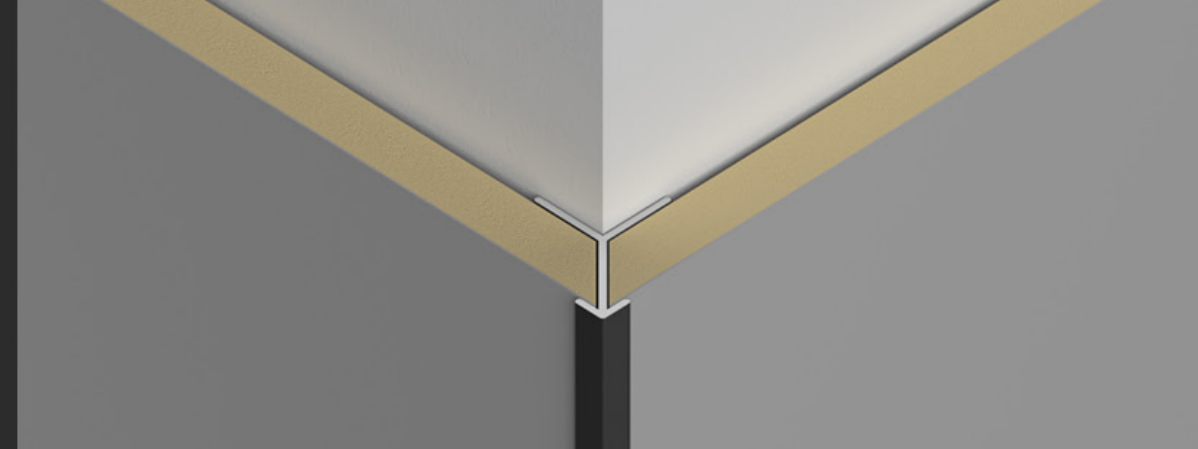


CORNER SLOTTING AND BENDING

1. Slotting of trimming machine

2. Hot air gun heating bending

3. Apply structural adhesive on the back of the wall panel



Apply structural adhesive on the back

STONE SERIES CASE ▼

STONE SERIES
51001

WPC WALL PANEL



STONE SERIES 51001

NAME: WPC wall panel

MATERIAL: Nanofiber powder

LENGTH AND WIDTH: 1100*2800(mm)

THICKNESS: 5mm&8mm

ENVIRONMENTAL PROTECTION GRADE: ENF

FIRE RATING: B1

PERFORMANCE: waterproof&bendable

STONE SERIES
51001

WPC WALL PANEL

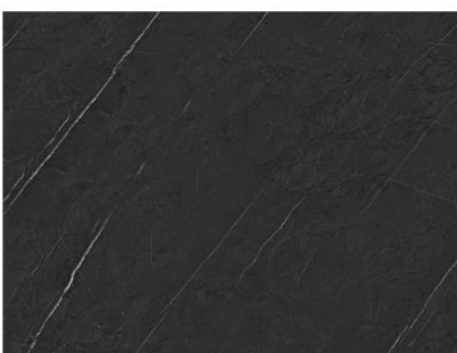
▼ COLOUR



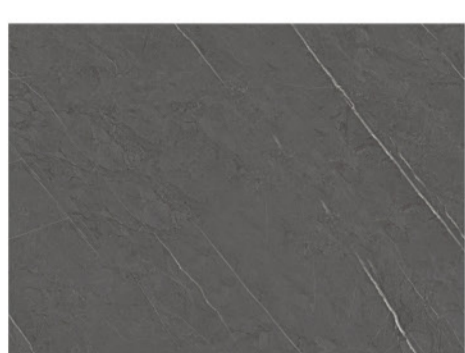
5001



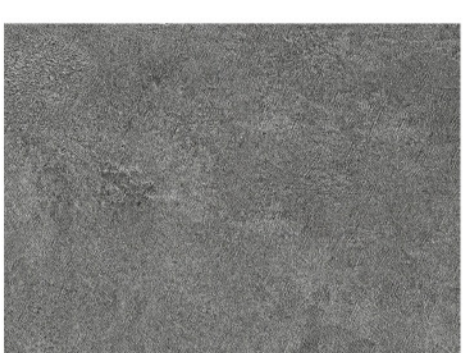
5002



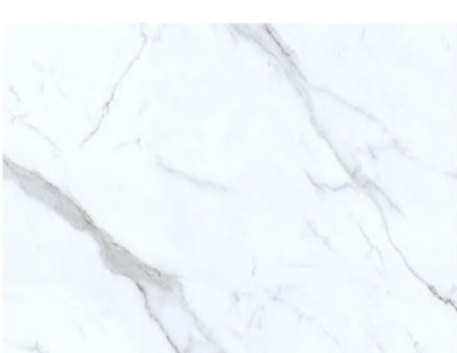
5003



5004



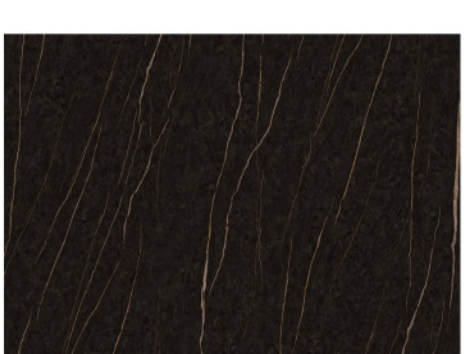
5007



5008



5009



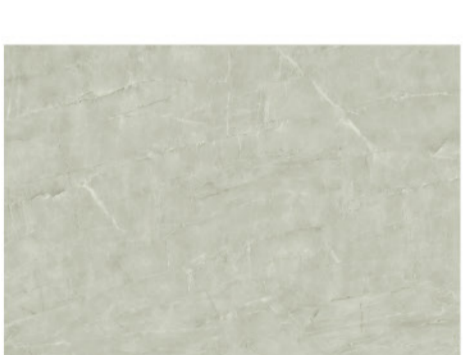
5010



5011



5012



5013



5014



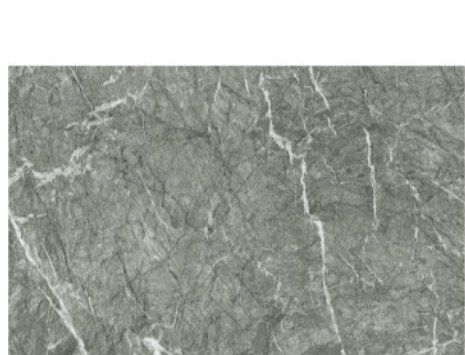
5015



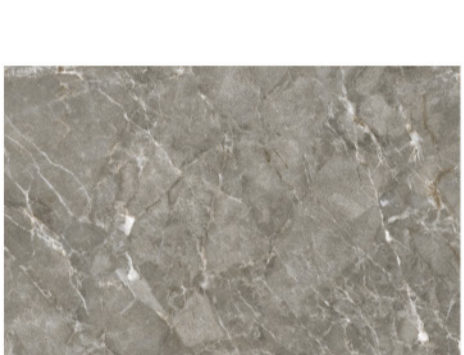
5016



5018



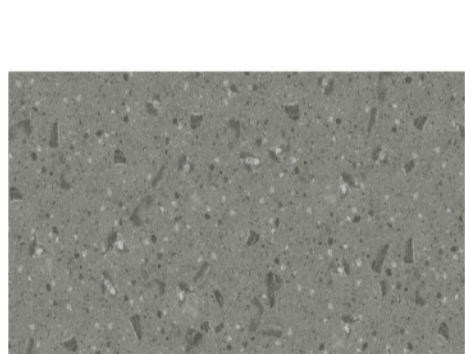
5019



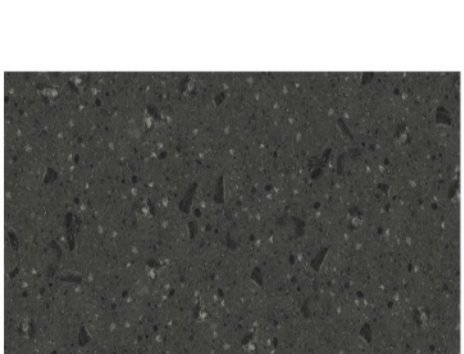
5020



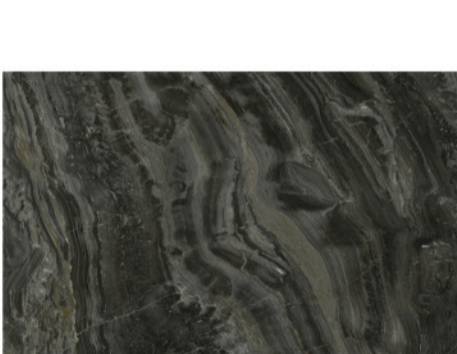
5023



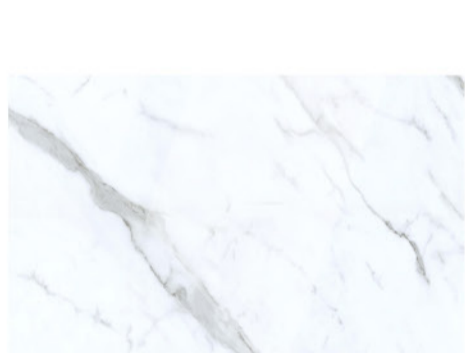
5024



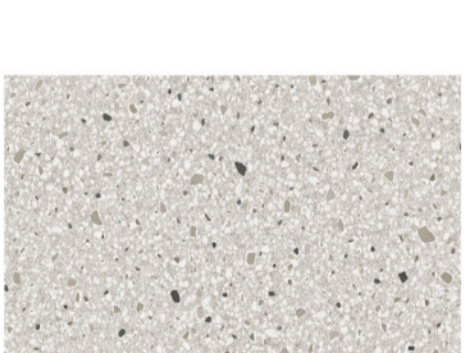
5025



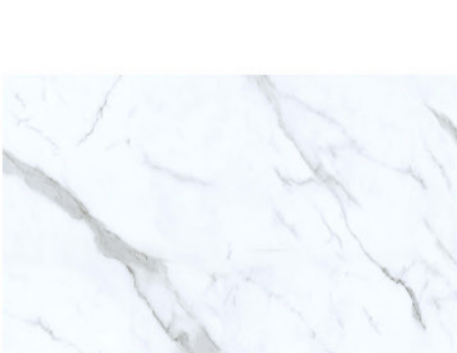
5026



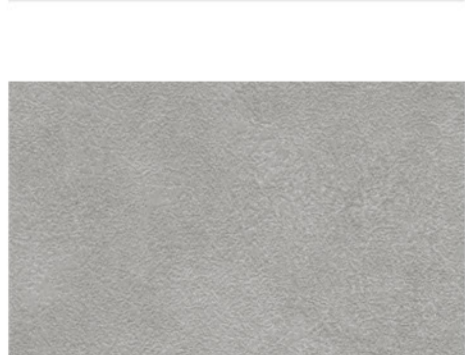
5028



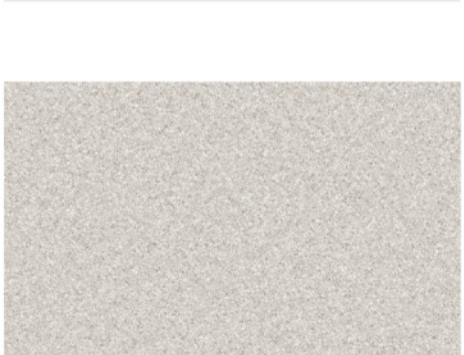
5029



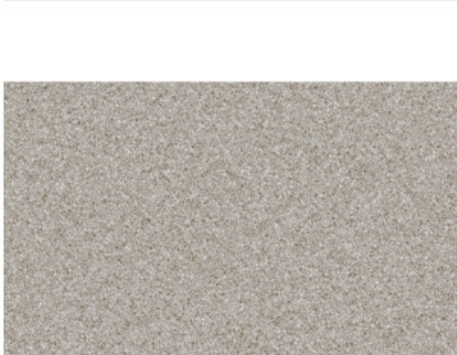
5030



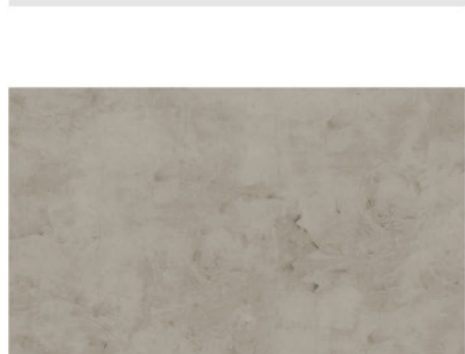
5032



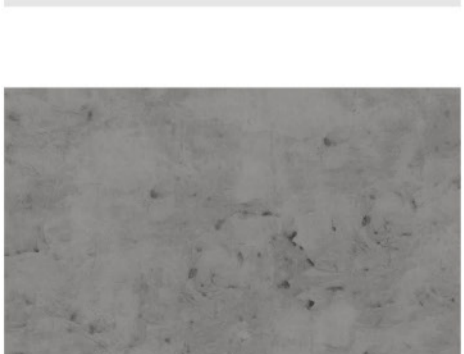
5033



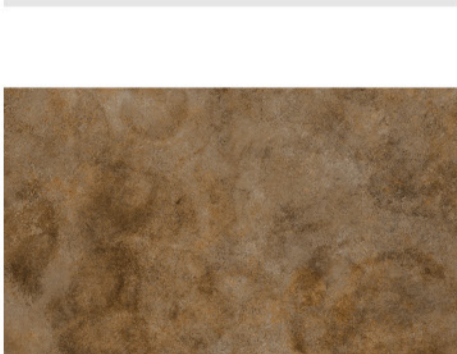
5035



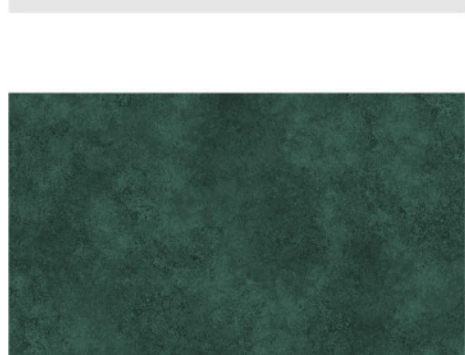
51001



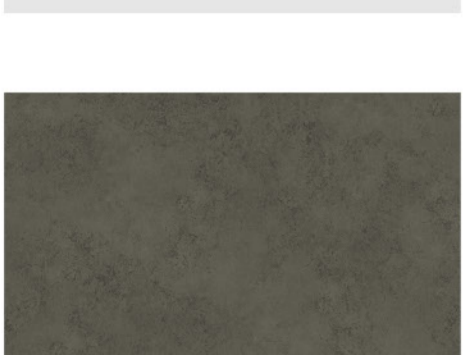
51002



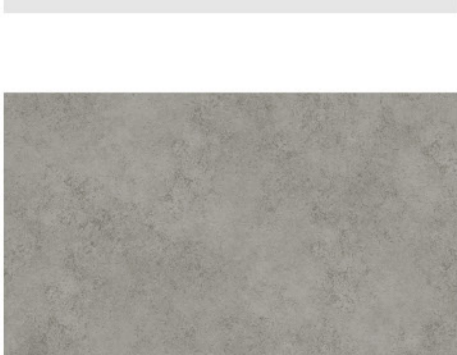
51003



51005



51006



51007